





# LET US RISE AND BUILD.

SO THEY **STRENGTHENED** THEIR  
HANDS **FOR THE GOOD WORK.**

Nehemiah 2:18

## THE DREAM

The past five and a half years have been one of the most exciting and challenging seasons for our family. It all started at the beginning of 2013. I was serving as the Worship and Discipleship Pastor at a church in rural Indiana, but God had been growing my heart and calling more towards preaching God's Word and church planting. As Courtney and I prayed about the future we had no idea where God was leading us, but we committed to go wherever He sent us to plant a church and spread His Gospel. So we sold our house and moved our family of 5 (plus the dog) into a 800 sq. ft. apartment in Chicago to be trained, equipped and sent out to plant a God-glorifying, Christ-exalting, Gospel-proclaiming, disciple-making church. After much prayer and searching we were blessed to have God send us back to St. Louis, our home and the city we love, to plant Harvest Bible Chapel St. Louis South in January of 2015.

## HUMBLE BEGINNINGS

We arrived in St. Louis with no people, no place to meet and no budget, but God was faithful to take the vision He had planted in us and spread it to others who came alongside us to help plant Harvest. We started in our rental home's basement, but as the Core Group began to grow, we moved to a local church on Sunday nights where over the course of 2 years, God grew that faithful group to 50 adults plus students and kids. Through faithful prayer and sacrifice, God provided a great location to launch our church at Green Park Lutheran School and all the needed equipment to provide a high-impact worship service every Sunday. Our Launch Sunday at Green Park was a powerful testimony and assurance that God was at work in a special way at Harvest.

## THE EARLY DAYS

Throughout the first three and a half years we have seen God move and work over and over again to grow us spiritually and numerically. His grace and truth have transformed marriages, delivered wayward believers, matured faithful disciples, fostered mutual care and saved lost sinners. His Spirit has developed a strong spiritual family that is passionately and purposefully pursuing the mission of Jesus Christ together. His Word continues to fuel in us the desire to know and worship Him in even deeper ways. God has been moving in big ways at Harvest, but we are far from finished. As we enter our new ministry year in 2020 we want to continue TAKING NEW GROUND for the Gospel and the Kingdom.

## A PLACE TO CALL HOME

This past year, through God's grace and wonderful gospel partnerships in the city, we were given a church building of our very own. God granted us a multi-million dollar building on a prime corner in the South County area free and clear. This is a huge blessing and answer to prayer for our church family. Having a permanent facility for ministry will not only multiply our opportunities with reduced burden on our volunteers, but also will show the community that we are here to stay and ready to minister to them. However, we never want to presume on the Lord's blessings, but rather steward what He gives us to maximize its impact and effectiveness for His Kingdom. So the question before us is how do we best steward this new building to maximize our discipleship efforts for His glory?

As we look to maximize the effectiveness of this building, we see that the current layout and flow are not best suited to minister to our church family, foster gospel relationships and most of all welcome and reach the lost with the Gospel. Therefore, God has given us a vision to update and renovate a portion of the building before permanently worshipping there in order to best leverage this great resource for His Kingdom. This plan will set us up for years of fruitful disciple making at all levels, expand our capacity to grow up to at least 500 worshippers, and create a space that is both welcoming and impactful for the unchurched.

This community has seen this church building on the corner for many years, but now is the time for them to see and experience new life-giving worship, teaching and discipleship. Now is the time for us to TAKE NEW GROUND for the Lord and His mission in South County. Our mission has always been to glorify God by making disciples, and with a little extra sacrifice and work we now have even more opportunity and potential to do just that. Courtney and I, and the rest of our Elders are ready to go and we can't wait to see all God is going to continue to accomplish for His great name through Harvest and this new facility for years to come. We believe this is a unique and special opportunity for our church! Church family, let's do this!

**You Are Loved.**  
**Micah Mathis // Lead Pastor**

# 2015 ..... 2016

## JANUARY 2015

+ Mathis family moves to St. Louis  
to start building the Core Group.

## JANUARY 4, 2015

+ First Prayer and Praise Gathering  
+ 6 adults, 5 kids attend

## JANUARY 16, 2015

+ First Vision Meeting at Mathis Home  
+ 18 adults attend  
+ 8 adults commit to the Core Group

## FEBRUARY 8, 2015

+ First Core Group Meeting  
+ 17 adults, 10 kids attend

## APRIL 12, 2015

+ Core Group outgrows the basement  
+ Core Group Meetings move to ROC Ministries

## OCTOBER 2016

+ Core Group grows to 50 adults + students and kids  
+ Core Group Transitions to Launch Team

## NOVEMBER 2016

+ Launch Team Raises \$50,000 in 7 Days in the Fuel the Launch Campaign.



# 2017

## JANUARY 15, 2017

+ Launch Sunday at Green Park Lutheran School - 200 in attendance

## MARCH 5, 2017

+ First Baptism Service - 6 people profess Christ

## SEPTEMBER 2017

+ Launch First Small Groups & Harvest Students Ministry

## MISSION

+ 23 New Members - 10 Baptisms  
+ \$190,000 Given to the Lord - \$5,500 Given to Missions .....



# 2018

## MARCH 16-17, 2018

+ First Marriage Conference - 22 Couples Attend

## JULY 28, 2018

+ First #SERVESTLDAY - Local Missions Project

## AUGUST 2018


+ Installed 2 New Elders  
+ Hired Full-Time Worship/Student Pastor

## OCTOBER 2018

+ Harvest Kids Ministry expands to better disciple the next generation.

### MISSION

+ 27 New Members - 11 Baptisms  
+ \$206,000 Given to the Lord - \$11,000 Given to Missions



# 2019

## JANUARY 2019

+ Young Adult Group Launches

## MARCH - APRIL 2016

+ 40 Days of Prayer Initiative

### MISSION

+ 10 New Members - 8 Baptisms - 2 New Preachers Trained  
+ \$250,000 Given to the Lord - \$14,000 Given to Missions

# 2020



## MARCH 1, 2020

+ Adopted Church@Affton + New Building  
+ 205 in worship - highest attendance to date.

## APRIL 24, 2020

+ Start hosting Mobile Market Food Pantries

## JULY 2020

+ Help Launch 1st Church Plant - Multiply Church, Des Moines IA

### MISSION

+ Projected Missions Giving - \$19,000

# GOD AT WORK



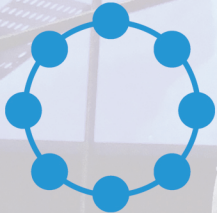
## WORSHIPPERS

- Harvest has experienced a **127%** increase in attendance since launch and a **36%** increase last year alone.



## BELIEVERS

- Since Harvest launched **29 people** have declared their faith in Jesus through believers baptism.



## DISCIPLES

- **90%** of worshippers who call Harvest their church home are being disciplined in weekly small groups.



## MISSIONARIES

- By the end of 2020 we will have invested **over \$49,000** in missions locally, nationally, and internationally.

We have hosted/participated in **over 100 service projects** in our community to spread the love of Jesus to the lost.

# LIFE CHANGE



**BILLY  
BRICKEY**

My time at Harvest has been a blessing only the Lord could have provided. I came to Harvest my first time as a broken sinful man trying to do everything on my own. Harvest quickly showed me that the Lord takes everyone into his embrace. I expressed my faith to the Lord and was baptized. God has shown me I can overcome my struggles with Him by my side. God is GREAT!



**CRAIG  
SIMPSON**

I love Harvest because I've seen myself grow in my spiritual life since I started attending. Being able to meet with like-minded people, who are flawed as I am, but who love the Lord and are being sanctified, has helped me to feel as though I am not walking this Christian road alone. My love for God, for fellow believers, and for the lost has grown so much since I began attending Harvest. Harvest has helped me find my purpose in life - desiring the things that God loves.



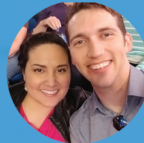
**JASON  
& LEAH  
SPIROS**

From the moment each of us heard Pastor Micah speak, we fully believed that God was doing something great and wanted to be a part of it. Being surrounded by people hungry for the Word and to follow hard after God, we have been strengthened, supported, and loved. Meeting and marrying our best friend is still the biggest WOW of our time at Harvest. He used the humble beginnings of our church plant; a group of God-fearing, Trinity-worshiping, committed believers with a unified purpose to create something spectacular and beautiful in our lives.



**JONATHAN  
& SAMANTHA  
TOLEDO**

We love Jesus and love being apart of Harvest because we are a living example of how God with the help of this church has saved our marriage and this isn't the end of our story. Some of our chapters have been so hard to get through but we are excited to see what the Author is going to write next. Buckle up, it's going to be a ride worth taking when God is in control of your future.



**ADAM &  
COURTNEY  
BOIVIN**

Our first Sunday at Harvest we knew this was more than just attending a service and being entertained. Being surrounded by folks that share our desire for a stronger relationship with Jesus and embrace His truth was and still is very impactful. Harvest has continued to guide our desire for God and His Glory. We are able to serve in small ways knowing the bigger impact is being made with all of us playing our parts. Nash continues to love & grow in his knowledge of the Word through Harvest Kids. We are blessed to know this group of believers and even more grateful to grow in making more disciples.

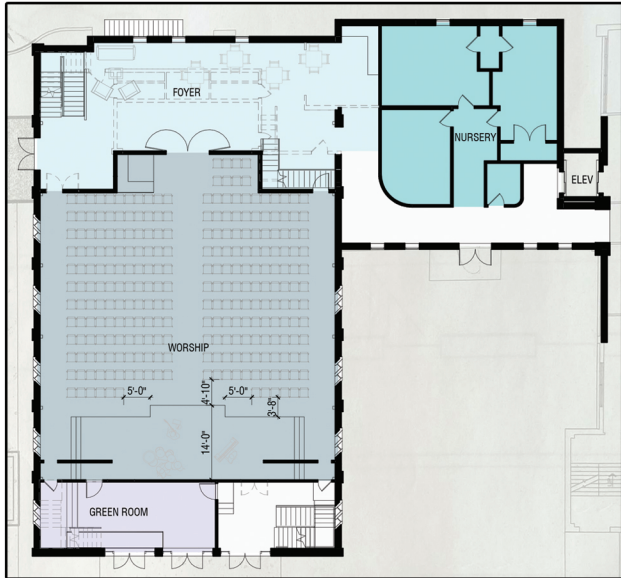


**MICHAEL  
MELVIN**

My life before Christ was filled with bad decisions and a deep lack of spirituality. In early 2019, someone very dear to me invited me to Harvest and I never looked back. After a couple of months of fellowship, prayer, and time in the word, I made the decision to repent of all my sin and brokenness that I had been holding onto for years and I put my faith in Christ. I was driving one day, put it in park on the side of road, and made the best decision of my life!

# WHAT IS THE TAKING NEW GROUND CAMPAIGN

The Taking New Ground Campaign is a vision to maximize the building God has graciously given us to most effectively fulfill our mission to reach the lost of our community and make disciples for the glory of God. While upfitting our new gathering place is central to this initiative, it's not the end goal. At Harvest people are the mission, and strengthening our facilities will allow us to make more and better disciples.



## MAXIMIZING FOR THE MISSION:

### + Large Lobby

With Connection Center and Hospitality Center

### + Worship Center

Reoriented, Updated, and Larger Capacity

### + Better Access

To the Worship Center, Bathrooms, Harvest Kids Check-In, and Classrooms

+ **Harvest Kids Space** – Updated and customized to meet the needs of our families and age groupings.

+ **Stage Lighting** – Updated to better facilitate both live and online worship.

+ **Signage** – New updated signage to help navigate the building and communicate our church culture.

+ **Exterior Updates** – A refreshed exterior with new signage that will grab attention and communicate that a new modern life-giving church is now meeting here, and be more inviting to the unchurched.



## A PLACE TO WELCOME

Any church space needs to be welcoming and inviting to guests, attenders, members, and families.

Guests need to experience a warm and inviting environment for them to encounter God without any distractions or hesitations. They need to be able to easily and intuitively navigate their way to the bathrooms, kid's ministry, and worship space. They need to feel comfortable to explore Jesus, the Gospel and Church without confusion or feeling like all eyes are on them. Many lost people give a church one shot. We don't want an awkward experience with a building to be the reason they don't come back again.

Likewise weekly attenders and members need a space that is more conducive to growing spiritually and relationally with one another. This is their church "home". They need space to gather, talk, pray, worship, and walk together in the Lord. With this campaign we can create that kind of space.



## A PLACE TO GROW

What good is a church space if it doesn't meet the needs of the congregation meeting there or worse yet limits their ability to grow and make more disciples of Christ?

This initiative will increase our capacity for worship services by 60 seats allowing us to grow to at least 260 people in one service and up to 500 if we eventually went to two services. That is setting us up for years of future growth and opportunity to pursue the mission. Likewise it will create the kind of space and flow we need to better facilitate our various church ministries and engage in more discipleship efforts. We will also be able to host better discipleship events and conferences with lower cost and higher impact.

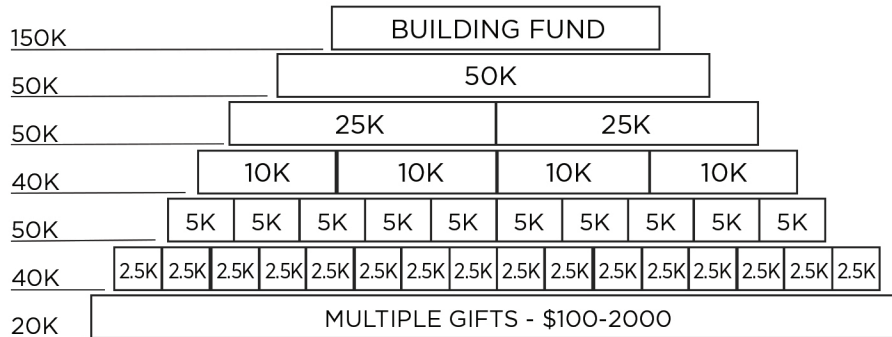


## A PLACE TO WITNESS

Our new building is on a prime intersection in the South County area with tons of vehicle and foot traffic. That means every day thousands of people pass by who still need to meet Jesus. Maximizing this building at this location will position us to better reach our community with the Gospel and let them know we are here to stay and serve. It will also set us up to continue to press forward in our missions efforts as we are able to donate some of our mobile church equipment to new church plants, host church planting events and have a home base for local outreach events. As a result of this campaign and renovation, we will have a well-equipped ministry hub from which to serve and send out.



### TOTAL PROJECT: \$400,000



*But who am I, and who are my people, that we should be able to give as generously as this? Everything comes from you, and we have given you only what comes from your hand.*

-1 Chronicles 29:14

# 2021 AND BEYOND

## DISCIPLESHIP & MISSIONAL OBJECTIVES

### EQUIP

#### GROWING PEOPLE TO MAKE BETTER DISCIPLES

- + Optimized space with more seating for high impact worship and preaching ministry.
- + More space for discipleship conversations and meetings.
- + Optimized rooms and access for Harvest Kids.
- + Event and Conference Hosting.

### EVANGELIZE

#### REACHING PEOPLE TO MAKE MORE DISCIPLES

- + Welcoming space for the lost to come and meet Jesus.
- + Permanent location in the community to communicate our commitment.
- + Outreach ministries - SG Projects, #SERVESTLDAY, Food Pantry, Biblical Soul Care Counseling
- + Community Impact: Schools, Businesses, Non-Profits, Neighborhoods

### SEND

#### TRAINING PEOPLE TO GO AND MAKE DISCIPLES

- + Training Pastors and Church Planters
- + Church Ministry Interns
- + Evangelism and Discipleship Classes
- + Short Term Mission Trips

### KINGDOM

Our motivation for **TAKING NEW GROUND** is Kingdom expansion. A facility that enables us to reach, grow, train, and send out more disciples will help us better saturate our community with the Gospel for His glory.

# HOW DO WE TAKE NEW GROUND TOGETHER FOR THE KINGDOM?

Our primary goal with this initiative is that 100% of the people who call Harvest their church home would have a life-changing encounter with God as it relates to faith and generosity. God does amazing things in the lives of His people when they trust Him and step out to sacrifice for His mission. We want each one of you to experience that with the Lord. Although not every person can give an equal dollar amount, we are praying that every person will give equal in sacrifice.

Our secondary goal is to raise \$250,000 across a 2-phase campaign. \$50,000 in generous one-time gifts, and \$200,000 in pledged giving spread out over a 2-year period. We have a generous ministry partner that will give us a 2-year bridge loan so we can quickly finish construction and move back into the building, helping us to avoid ongoing rent expense. At the end of the 2 year pledge period, the loan will be paid off and we will have an updated facility for ministry, free and clear.

It is important that these sacrificial gifts be above and beyond our regular-tithes and offerings so we can continue to do effective ministry as well. We believe as we step out in faith and sacrificial generosity, the Lord will enable us to Take New Ground for His Kingdom locally and globally.

## COMMITMENT TO RAISE

**\$250K BY THE END OF 2022**

## WAYS TO SACRIFICIALLY GIVE



SACRIFICE EVERYDAY LUXURIES



SELL/DOWNSIZE MAJOR ITEMS



EXTRA HOURS OR SIDE JOBS



DELAY LARGE PURCHASES



REPURPOSE UNUSED FUNDS



ASK OTHER PARTNERS TO GIVE

# HOW DO I GIVE?



## GIVE BY MAIL

Checks can be made out to Harvest with “Taking New Ground” in the memo.

Harvest Bible Chapel  
9607 Gravois Rd.  
St. Louis, MO 63129



## GIVE ONLINE

We make it easy and convenient for you to give online through our App or website:

[www.harveststlsouth.org](http://www.harveststlsouth.org)

***\*Make sure to designate your gift to the “Taking New Ground Fund”***



## GIVE BY STOCK

Harvest has the ability to receive stock gifts.

For some, this is the most effective way to use their resources.

***\*Make sure to designate your gift to the “Taking New Ground Fund”***



## GIVE ON SUNDAY

During our weekly services, you can give by placing your gift in the offering bucket.

***\*Make sure to designate your gift to the “Taking New Ground Fund”***

Please make any giving to the ***Taking New Ground*** campaign above and beyond your normal tithes and offerings. While we are excited to maximize the building for God’s mission, we also don’t want to hinder the work of the mission by depleting our normal operating funds. Let’s continue to be faithful to the Lord in both areas so He can continue to work through our church.

# TAKING NEW GROUND FAQ

## 1. Can't we just use the building as is?

We have been blessed by the Lord with a 5-talent resource and we want to multiply it into a 10-talent resource for His mission and glory. We do not want to simply be complacent or settle like the 1-talent servant. Our desire is to add our sacrifice to God's provision to maximize the effectiveness of our facility, set us up for excellence in ministry, and make room for more growth and disciple making for years to come.

## 2. How will this help us better reach unchurched people?

Unchurched people are often coming in with lots of worry, hesitation, and preconceived ideas about the church. The current building is giving them plenty of reasons not to return again. Things that we can often overlook because we know the greater value of Jesus are still hindrances to them because they haven't experienced Him yet. We want to eliminate those so they will continue to come and hear the life changing Gospel of Jesus Christ. Updating the exterior will send a message that this is a modern church rather than the traditional church they have experienced in the past. The updated lobby and kid's ministry area will help them feel welcome and at ease that their kids are safe and easily accessible. The reoriented worship center will keep them from having to enter in front of a crowd of strangers and feel like all eyes are on them and confirm all the fears and hesitations they had of coming in the first place.

## 3. Why do the renovations cost so much?

First, of all, construction is always expensive and is only growing in cost as time passes. Secondly, we are having to retrofit an existing building which always brings unique challenges and added expense. Thirdly, we are renovating a lot of square footage to be able to best serve and grow our church. \$400,000 does seem like a large budget, but in comparison is only about 10% of the value of the property, which is actually quite reasonable.

## 4. Why not start with a smaller renovation?

We could avoid fundraising right now if we reduced the scope of the renovation and spread it out over the coming years. However, this would result in multiple projects and/or campaigns that could be harder on the congregation, hinder our ability to worship in the facility, and cost more in the long run by doing the projects piecemeal. This approach will take more upfront sacrifice, but will achieve greater results for the money in less time and trial.

## 5. Why are we taking a loan? Isn't the Bible anti-debt?

The Bible does warn against excessive or extended personal debt that enslaves a person. However, when it is well measured with both an asset to balance it and a reasonable plan to pay it off, loans are not unbiblical. In this case we are taking a \$200,000 loan out against a multi-million-dollar asset with a clear and reasonable plan to pay it off in only 2 years. This is not irresponsible debt, but rather wise financial planning and budgeting to maximize the church's resources for ministry.

## 6. Why not wait to start construction until after we have raised all the funds?

Because we are renovating the worship center we can't move our services back into the building until the renovation is complete. Until the renovation is done we are paying both utilities and expenses at the building as well as rent at Green Park. The quicker we can move back into the worship center, the more we can save by no longer paying rent at Green Park. Expediting the construction will both save us money in the long run and allow us to start anchoring ministry in the building as soon as possible.



[www.harveststlsouth.org/tng](http://www.harveststlsouth.org/tng)